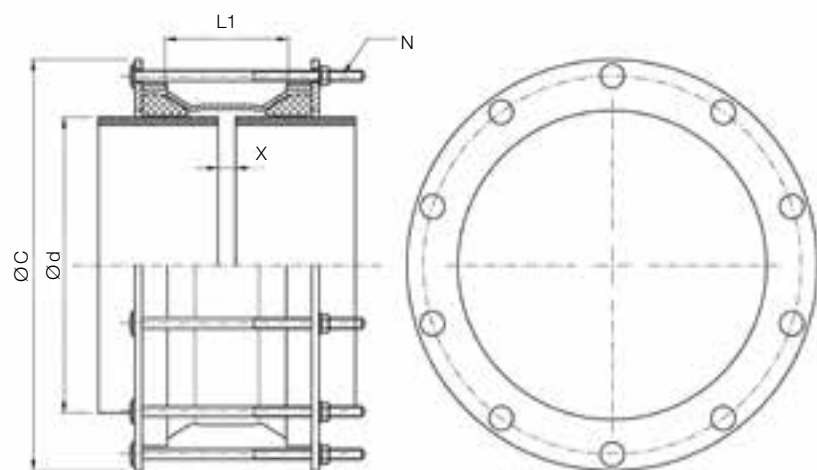


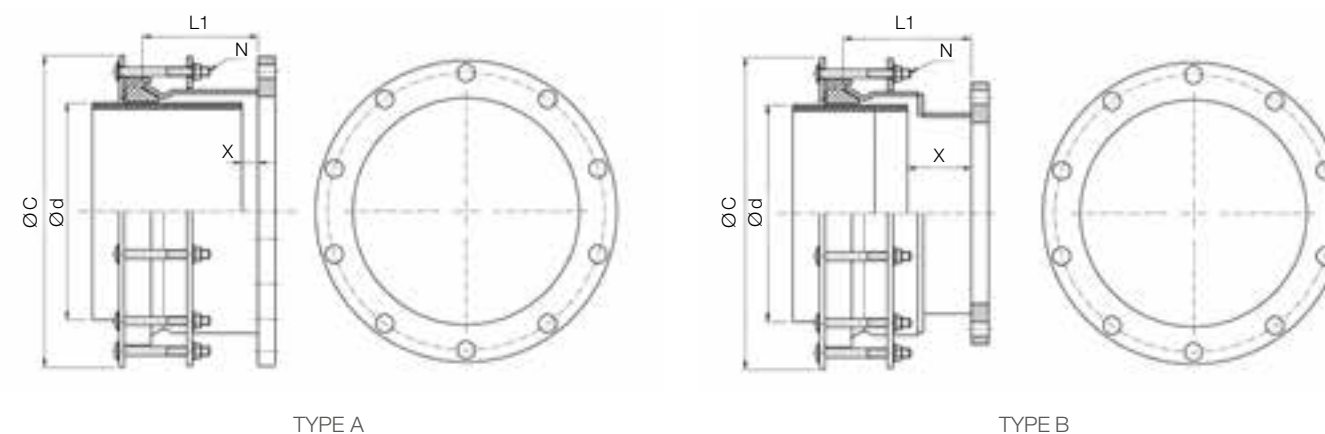
# MULTISIZE M10 SINGLE BOLT COUPLING



DN	Ø d		MOP (PN)	L1	Max. External Dimension Ø C	Compression Bolts Quantity N	Gap X		Weight	
	Min.	Max.					Max.	Min.		
350	340	370	6-10-16	170	546	10	60	20	35	
	365	395	6-10-16		571				37	
400	390	420	6-10-16		596				12	40
	410	440	6-10-16		616					42
450	438	468	6-10-16		644				14	45
	465	495	6-10-16		671					47
500	490	520	6-10-16		696				16	49
	518	548	6-10-16		724					53
600	590	620	6-10-16		796				18	58
	620	650	6-10-16		826					60
700	652	676	6-10-16		819	20			62	
	680	704	6-10-16		847				65	
800	700	724	6-10-16		867	22			67	
	726	750	6-10-16		893				72	
900	754	778	6-10-16		921	24			75	
	792	816	6-10-16		959				79	
1000	806	830	6-10-16		973	26			82	
	824	848	6-10-16		991				83	
1200	856	880	6-10-16		1023				85	
	882	906	6-10-16		1049				88	
1000	902	926	6-10-16		1069				89	
	934	958	6-10-16		1101				92	
1000	960	984	6-10-16		1127				95	
	996	1020	6-10-16		1163				97	
1000	1016	1040	6-10-16	1183		100				
	1036	1060	6-10-16	1203		102				
1000	1068	1092	6-10-16	1235		104				
	1100	1124	6-10-16	1267		108				
1000	1116	1140	6-10-16	1283		109				
	1140	1164	6-10-16	1307		111				
1000	1180	1204	6-10-16	1347		115				
	1206	1230	6-10-16	1373		117				
1000	1244	1268	6-10-16	1411		119				

The data concerning the min. and max. gap is calculated on the minimum outside diameter of the product's range. Multisize series and wide range steel fittings provide the maximum hydraulic seal, however they do not restrain axial pipes movement (for this type of products please refer to the MULTIGRIP section)

# MULTISIZE M40 FLANGE ADAPTOR



DN	Ø d		Flange DN	Flange PN	Type	L1	Max. External Dimension Ø C	Compression Bolts Quantity N	Gap X		Weight
	Min.	Max.							Max.	Min.	
350	340	370	350	10-16	A	216	546	10	160	20	62
	365	395					571				64
400	390	420	400	10-16	596		73				
	410	440			616		75				
450	438	468	450	10-16	644		88				
	465	495			671		90				
500	490	520	500	10-16	696		110				
	518	548			724		112				
600	590	620	600	10-16	796		150				
	620	650			826		152				
700	652	676	700	10-16	819		154				
	680	704			847		156				
800	700	724	800	10-16	867		158				
	726	750			893		161				
900	754	778	900	10-16	921		165				
	792	816			959		172				
1000	806	830	1000	10-16	973		173				
	824	848			991		175				
1200	856	880	1200	10-16	1023		177				
	882	906			1049		194				
1000	902	926	1000	10-16	1069		196				
	934	958			1101		198				
1000	960	984	1000	10-16	1127		200				
	996	1020			1163		235				
1000	1016	1040	1000	10-16	1183	237					
	1036	1060			1203	239					
1000	1068	1092	1000	10-16	1235	241					
	1100	1124			1267	244					
1000	1116	1140	1000	10-16	1283	245					
	1140	1164			1307	247					
1000	1180	1204	1000	10-16	1347	308					
	1206	1230			1373	310					
1000	1244	1268	1000	10-16	1411	313					

The data concerning the min. and max. gap is calculated on the minimum outside diameter of the product's range. Multisize series and wide range steel fittings provide the maximum hydraulic seal, however they do not restrain axial pipes movement (for this type of products please refer to the MULTIGRIP section)