

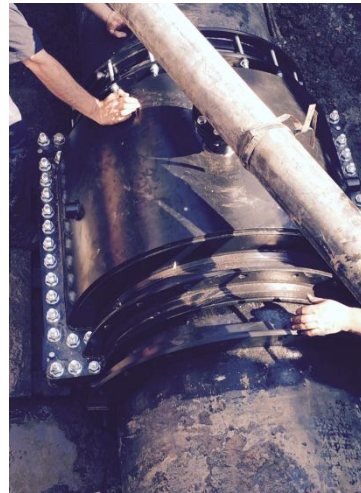


900mm Nova Siria Duofit Encapsulation Collar Fitted at Axbridge

Following a call from a regular customer in the South West an 890mm cast main was leaking on the socket/spigot lead joint, a standard model Nova Siria Duofit Encapsulation clamp was fitted.

The installation was under live conditions with the leak (whilst small) at 9-9.5bar of pressure. The total installation began at 13.00hrs and testing was completed by 18.40 with no remedial adjustment or tightening necessary. The gang who carried out the installation had

not fitted a collar of this type before although were given on site instruction from R2M and subsequently felt confident that they could install future units un accompanied. The installation was deemed a 100% success.



Unit 6, Metcalf Drive,
Altham Industrial Estate,
Accrington BB5 5TU
Tel: 01282 778030
Fax: 01282 770590

Email: sales@r2mltd.co.uk
Web: www.r2mltd.co.uk

300-4000mm | 30 Tolerance | 16 Bar Rated | Live Installation