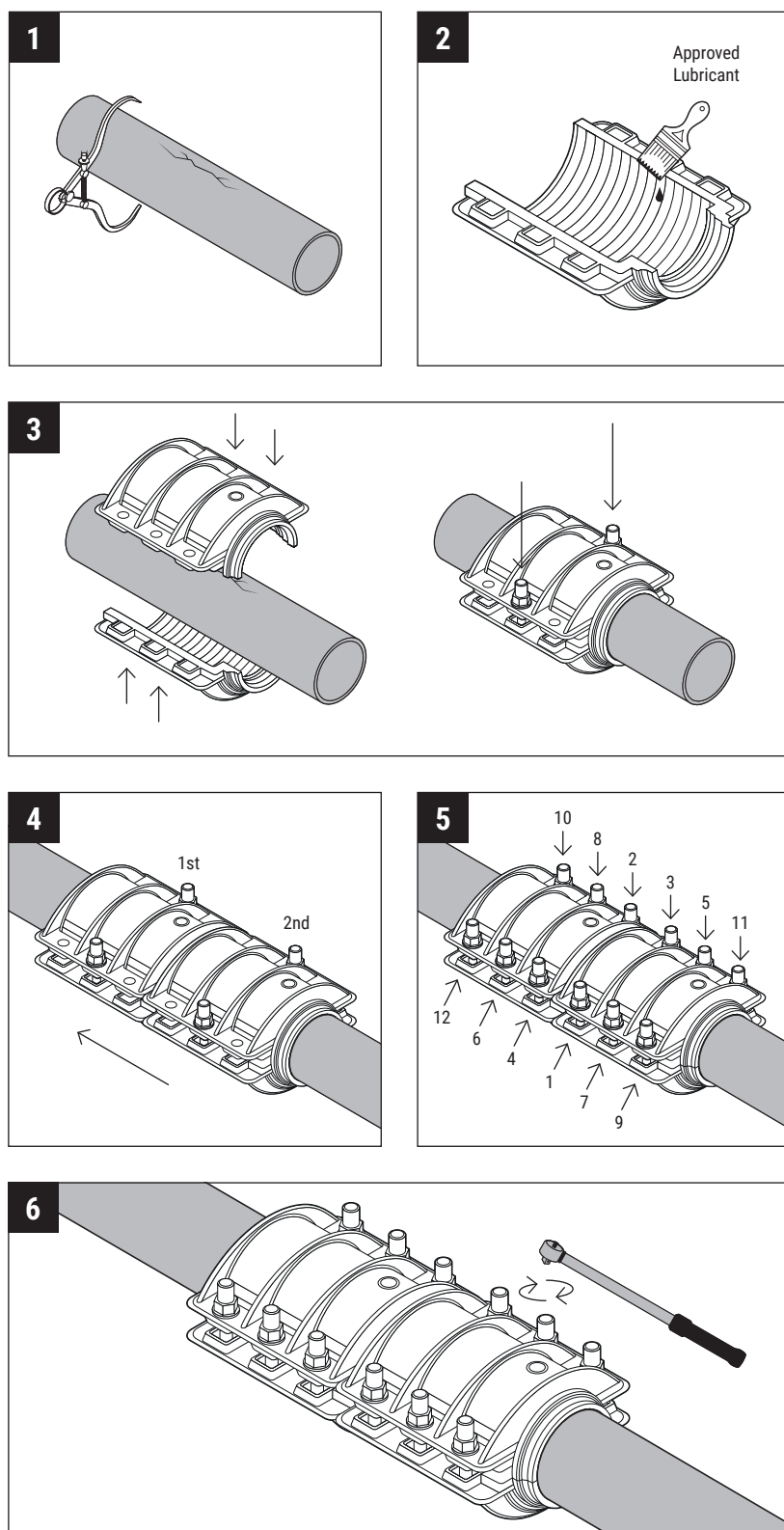


# Thelen Connector Clamp

## INSTALLATION & ASSEMBLY INSTRUCTIONS



## INSTALLATION

- 1.) Measure the outside diameter of the pipe. Check that it falls within the range of the fitting. (The range is the numbers in yellow). Then clean the area to be sealed thoroughly, removing any scale, rust or debris.
- 2.) Lubricate the sealing gaskets with an appropriate, approved lubricant.
- 3.) Tighten the middle bolts to a low torque.
- 4.) Place the second clamp on the connecting ring part of the seal. Tighten the middle bolts as before. (Repeat the process if more clamps are needed).
- 5.) Tighten the bolts crosswise to a low torque in the order shown.
- 6.) Use a torque wrench to tighten the bolts in three controlled steps, in the order as shown in Step 5. For example:

Follow the described sequence using the table below for the maximum torque setting.

Size of Bolts	Required Torque
M12	70 - 90Nm
M16	120 - 150Nm
M20	200 - 250Nm

**For more information contact R2M Limited. Call on 01282 778030, or visit our website [www.r2mltd.co.uk](http://www.r2mltd.co.uk)**