

WATER CAM 1

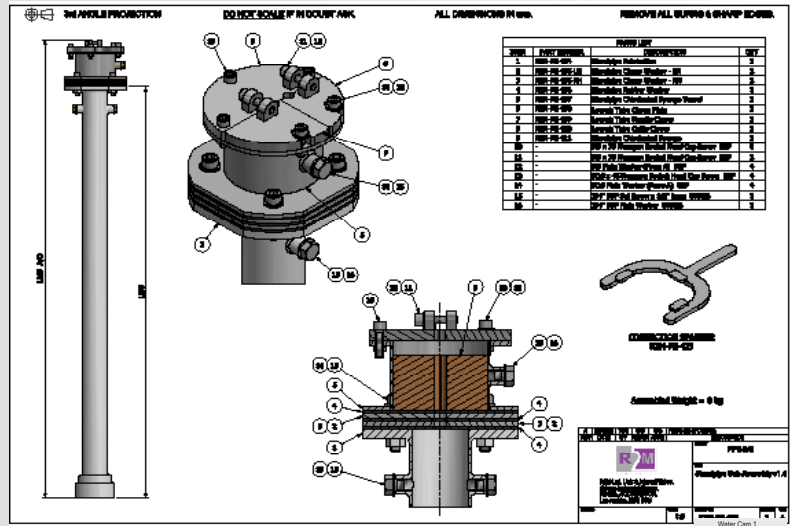
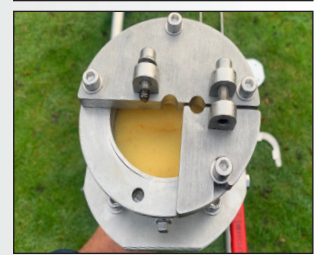
R2M's Water Cam 1 system is supplied as a complete self-contained kit comprising of a 35mm camera head with built in A-B tracing, monitor, control pack, battery pack, launch tube set and 100mtrs of cable. It is extremely robust and portable and is supplied with a training package which includes a day's onsite training on your live water network.

The system is 16bar rated and includes a chlorination system in the launch tube, which itself, is designed to attach directly onto thru-bore hydrants. It is supplied also with 2" BSP adapters and 50mm PN16 flanged connections, to allow entry into pipes from normal connections or reactive 'hot taps'. This gives water companies and contractors the freedom to find leaks and obstacles inside pipelines, without the need to call costly specialist contractors in.

The system is supplied as a 'ready to go' item, which can be deployed on the date of delivery to help the water companies reach the challenges on Amp7.

BENEFITS OF THE WATER CAM

- Detecting leaks, which do not show themselves above ground, usually via the hydrophone and occasionally by the camera.
- Location pinpointed via A-B tracing.
- Internal condition of the main.
- Material of the main for correct records.
- Obstructions within the main.



The R2M Water Cam 1 system is 100% self contained, has a battery pack capable of giving 10hrs service and can be transported in a normal car. This gives the ability to find the smaller, non visible leaks quickly, conveniently and without the need for costly specialist contractors.

Control Unit	Camera (35mm)	Battery Pack	Inspection Rod	Launch Head	Optional extras
10.4" TFT LCD Panel	Stainless steel body	12v 11Ah Lithium Ion	12mm Flexible rod cable	Metallic - Vertical angle launch assembly, compatible for connection on WASK drilling base on metallic mains	Meterage arm
1024x768 Resolution	976x496 Pixels @ 50Hz	12v Li-ion fast charger	Polypropylene outer coating	PE - Live launch systems for low and medium pressure	Company logo embossed onto unit
Anti-Reflective, sun-light readable screen	12x White LED Illumination	12v Socket	100 mtr Length	Compatible for connection on 63mm Radius top tee	Numerous colours for Pelli case
USB Outputs	Includes hydrophone	USB Sockets*	On-screen meterage unit	Launch tube assembly for entry via thru-bore hydrants or flanges	Recordable option to store up to 1 TB. USB and SD card downloadable
16 page on screen text writer		Water resistant case	A-B Tracing through complete coil (cat & generator not supplied)	Includes integral swab chamber for chlorination of rod	
Waterproof keyboard					
110v-240v Power input					
12v Power input					

*available with 60ah battery pack only